

**CLEAN ROOM MONITOR CR131**

DISPLAY	: a. 4 row 0.56" LED with 4 digit RTC & 3 row 4 digit parameter display b. 4 row 0.8" LED with 4 digit RTC & 3 row 4 digit parameter display d. 3 row 3 digit 0.56" LED parameter display e. Graphic LCD, Blue backlit f. Colour LCD Touch screen
No. Of Channels	: Three
Input	
Channel 1	: 0 – 1V DC / 0 to 10V DC / 4 – 20 mA DC / * Or Internal RH & Temperature Sensor Or <b>MODBUS</b>
Channel 2	: 0 – 1V DC / 0 to 10V DC / 4 – 20 mA DC * Or Internal RH & Temperature Sensor Or PT100 Or <b>MODBUS</b>
Channel 3	: 0 – 1V DC / 0 to 10V DC / 4 – 20 mA DC * Or Internal DP sensor Or <b>MODBUS</b>
Channel Selection	: Channel data display ON or OFF : User configurable
Data Displayed	: Measured value of 3 channels, 3 digit display for each channel Measured value display flashing if value in NOT within limits. Alarm Limit display ON LCD : User configurable For LED versions, units are Laser marked on the faceplate.
Measurement Range	: Ch. 1 : Scalable 0 to 99.9 ( Depends on Sensor) Ch.2 : Scalable -39.9 to 99.9 Ch.3 : Scalable 0 to 99.9 / 0 to 999 Ch. 3 : -90 to 245 Pa( for Internal DP sensor) (Other Ranges on Request)
Accuracy	: 0.1% $\pm$ 2 counts 1% $\pm$ 2 counts for Internal DP Sensor
Alarm	: Internal Alarm Buzzer for Alarm with Programmable delay Alarm Buzzer silenced on Acknowledge or on Normalisation of violation.
Alarm Relay	: 1 Potential free contact, 24V DC 500mA rating (OPTION)
Alarm Limit setting	: From MODBUS Master on MODBUS RTU / TCP/IP communication. Or Through Keypad inside the enclosure with Password protection
Alarm Delay	: Programmable, 0 to 255 seconds.
Alarm Acknowledge*	: Ack. Key on faceplate keypad (Flush & Wall Mount versions) * Or Contactless Alarm Acknowledge (OPTION) Or ACK Push button on Flameproof enclosure (OPTION) Or TOUCH ACK on Flameproof enclosure (OPTION)



- Calibration : Software Calibration for each channel  
Single point OR two point calibration.
- Clock : Internal Battery backed clock. (OPTION)
- Communication : RS 485 MODBUS RTU \*  
Or MODBUSTCP/IP\*
- OPTION 1 : 3 Channel 4 – 20 mA DC Output \*
- OPTION 2 : 3 Channel 0 – 10V DC Output \*
- OPTION 3 : 24V DC Digital Input to trigger Alarm Buzzer from DDC controller\*  
OR 24V DC Digital Input Room Door Open Indication\*  
OR 24V DC Digital Input AHU ON Indication\*
- LCD Display Features: Limit display for Channels : User Configurable, ON or OFF (LCD Version)  
Unit display for channels : User selectable, %RH, °C. mmWC or Pa  
Date & Time display on LCD \*
- Power : 24V DC  $\pm$  10%
- Enclosure :
- Flameproof enclosure for Installation in 50mm panel  
Faceplate :270 (W) x 270 (H)  
Panel Cutout : 213 (W) x 254 (H)  
Max 5 Cable entries in FLP enclosure  
Flameproof Certificate: ERTL(E)/TES/G106/0024/12-17
- NON Flameproof Flush Mount  
Back Box :170 (W) x 154(H) x 40 mm Powder Coated Steel  
Faceplate : 210 (W) x 180 (H)  
Panel Cutout : 174 (W) x 155(H)  
Cable Entry : Oval slot on backbox,
- NON Flameproof Wall Mount  
Back Box :210 (W) x 180 (H) x 75 mm Powder Coated Steel  
Faceplate :210 (W) x 180 (H)  
Cable Entry :5 x PG9 cable glands

**\*: Factory set. Must be specified at the time of ordering**

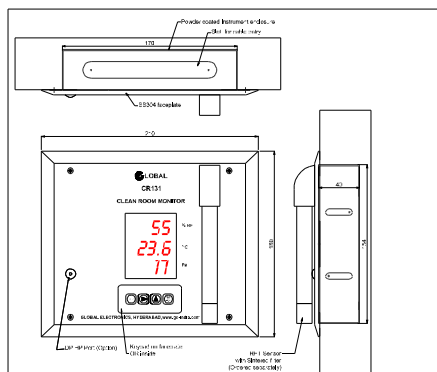
Specifications subject to change without prior notice.



CR131 ORDERING CODE										
CR131										
FLP ( for 50mm panel)	F5									
FLP for 100mm panel)	F1									
Wall Mount	WM									
Flush Mount NFLP	PN									
3 row 0.56" LED display		LED								
3 row 1" LED display		LD1								
3 row 3 digit 0.56"LED& 4 digit 0.56" LED for Time		TD5								
4 row 4 digit 0.56"LED		TD4								
4 row 4 digit 0.8"LED		TD8								
Graphic LCD		LCD								
Colour Touch Screen display		TS								
Ch.1 Input : 0 – 1V DC			1V							
Ch.1 Input : 0 – 10V DC			10V							
Ch.1 Input : 4 – 20 mA DC			mA							
Ch.1 Input : Integral RHT sensor on faceplate			INT							
Ch.1 Input : RHTA1 sensor on faceplate			RH							
Ch.1 OFF			N							
Ch.2 Input : 0 – 1V DC				1V						
Ch.2 Input : 0 – 10V DC				10V						
Ch.2 Input : 4 – 20 mA DC				mA						
Ch. 2 : PT100 input				PT						
Ch. 2 : PT100 on faceplate				PF						
Ch.2 : Input : Integral RHT sensor on faceplate				INT						
Ch.2 : Input : RHTA1 sensor on faceplate				RH						
Ch.2 OFF				N						
Ch.3 Input : 0 – 1V DC					1V					
Ch.3 Input : 0 – 10V DC					10V					
Ch.3 Input : 4 – 20 mA DC					mA					
Ch.3 Input : Internal DP sensor					DP					
Ch.3 Input : Internal DP with HP port on faceplate					DF					
Ch.3 OFF					N					
DP Units mmWC						WC				
DP Units Pa						PA				
All Channel Input MODBUS RS485			M	M	M					
Alarm Ack. On Faceplate, keypad inside								AC		
TOUCH Alarm Ack. (only in FLP versions)								TA		
Contactless Alarm Acknowledge								GS		
Keypad on Faceplate (Non FLP versions)								KB		
Keypad inside								IK		
MODBUS RS 485 communication								MB		
MODBUS ETH communication								ET		
3 channel Isolated 4-20mA DC output								mA		
Digital Input for Alarm Triggering									IA	
Digital Input for Door Open Indication									ID	
Cable Entry (Non FLP) Oval slot in Backbox										CS
Cable Entry (Non FLP) PG9 cable gland										CG



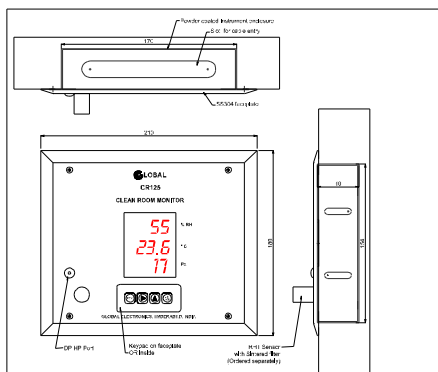
# CR131 LED 3 row 3 digit 0.56" LED



NOTE:  
All dimensions are in mm unless otherwise stated.  
This drawing is the property of Global Electronics and shall not be copied, reproduced or distributed without our express written permission.

Rev. No.	Description	By	Date	Approved
01	GLOBAL ELECTRONICS HYDERABAD-500029	DESIGNED: [Signature]	07/04/18	MS
02		DRAWN: [Signature]	07/04/18	MS
03		APPROVED: [Signature]	07/04/18	

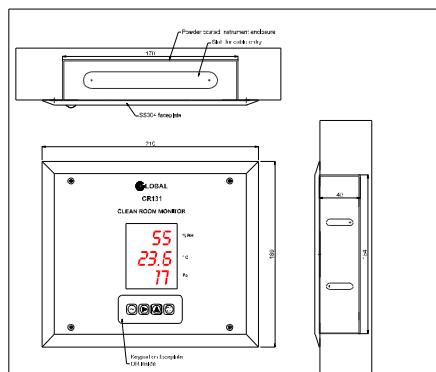
Scale: 1:1  
Title: CR131 LED RHT1 DP Flush Mount GA Drawing  
Drawing Number: G.E. CR131 LED RHT1 DP  
Sheet: 1 of 1 Rev: 0



NOTE:  
All dimensions are in mm unless otherwise stated.  
This drawing is the property of Global Electronics and shall not be copied, reproduced or distributed without our express written permission.

Rev. No.	Description	By	Date	Approved
01	GLOBAL ELECTRONICS HYDERABAD-500029	DESIGNED: [Signature]	07/04/18	MS
02		DRAWN: [Signature]	07/04/18	MS
03		APPROVED: [Signature]	07/04/18	

Scale: 1:1  
Title: CR125 LED Integral RHT DP Flush Mount GA Drawing  
Drawing Number: G.E. CR125 LED RHT DP  
Sheet: 1 of 1 Rev: 0



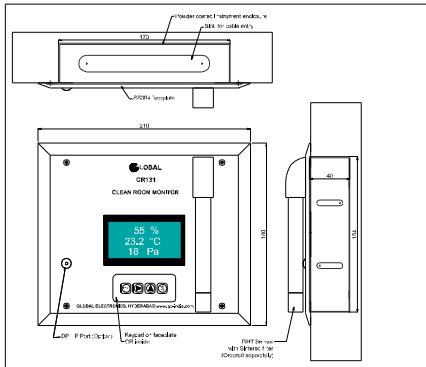
NOTE:  
All dimensions are in mm unless otherwise stated.  
This drawing is the property of Global Electronics and shall not be copied, reproduced or distributed without our express written permission.

Rev. No.	Description	By	Date	Approved
01	GLOBAL ELECTRONICS HYDERABAD-500029	DESIGNED: [Signature]	07/04/18	MS
02		DRAWN: [Signature]	07/04/18	MS
03		APPROVED: [Signature]	07/04/18	

Scale: 1:1  
Title: CR131 LED RHT DP Ext sensor Flush Mount GA Drawing  
Drawing Number: G.E. CR131 LED RHT DP Ext sensor  
Sheet: 1 of 1 Rev: 0



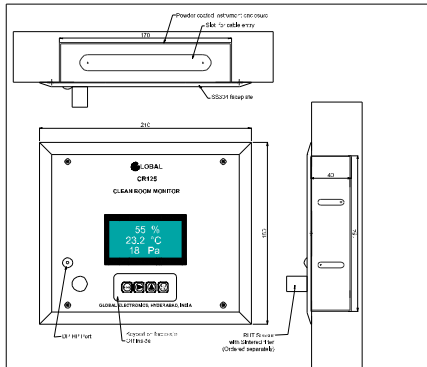
# CR131 LCD



NOTE: All Dimensions are in mm unless otherwise stated.  
This drawing is the property of Global Electronics and shall not be copied, reproduced or distributed without our express written permission.

Rev. No.	Description	By	Date	Approved
01	GLOBAL ELECTRONICS HYDERABAD-000029	DESIGNED	07/04/18	TR
02		DRAWN	07/04/18	TR
03		CHECKED	07/04/18	TR
04		APPROVED	07/04/18	TR

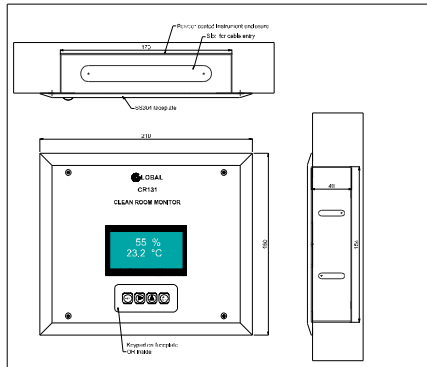
Scale: NTS Title: CR131 LCD RHTA1 DP Flush Mount GA Drawing  
Sheet: 1 of 1 Rev: 0



NOTE: All Dimensions are in mm unless otherwise stated.  
This drawing is the property of Global Electronics and shall not be copied, reproduced or distributed without our express written permission.

Rev. No.	Description	By	Date	Approved
01	GLOBAL ELECTRONICS HYDERABAD-500028	DESIGNED	20/11/18	TR
02		DRAWN	20/11/18	TR
03		CHECKED	20/11/18	TR
04		APPROVED	20/11/18	TR

Scale: NTS Title: CR125 LCD Integral RHT DP Flush Mount GA Drawing  
Sheet: 1 of 1 Rev: 0



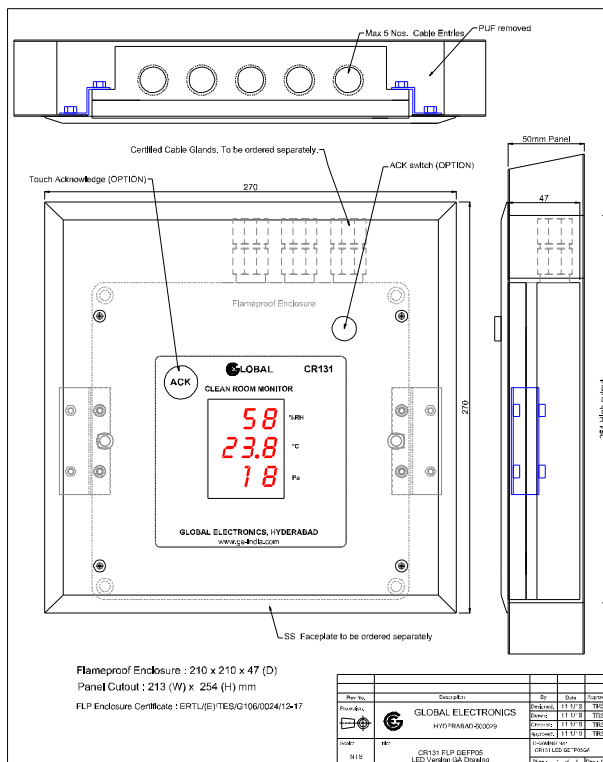
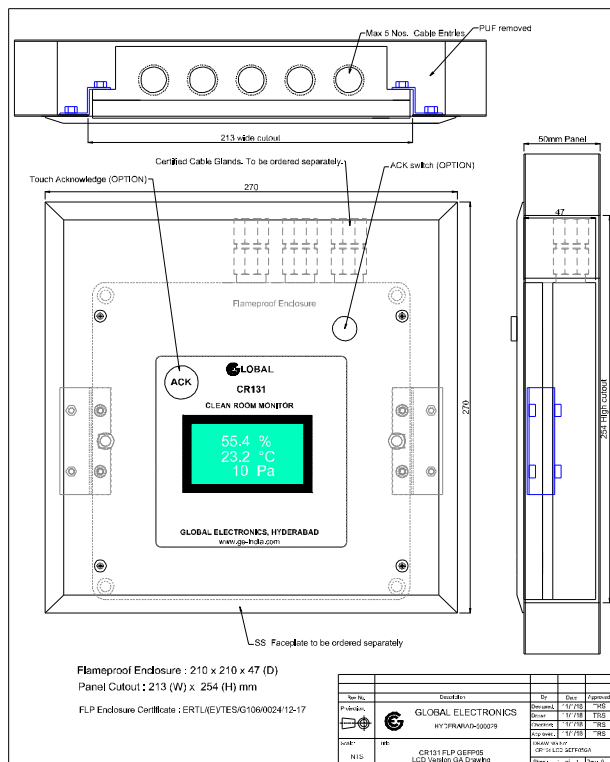
NOTE: All Dimensions are in mm unless otherwise stated.  
This drawing is the property of Global Electronics and shall not be copied, reproduced or distributed without our express written permission.

Rev. No.	Description	By	Date	Approved
01	GLOBAL ELECTRONICS HYDERABAD-000029	DESIGNED	07/04/18	TR
02		DRAWN	07/04/18	TR
03		CHECKED	07/04/18	TR
04		APPROVED	07/04/18	TR

Scale: NTS Title: CR131 LCD RHT DP Ext. sensors Flush Mount GA Drawing  
Sheet: 1 of 1 Rev: 0

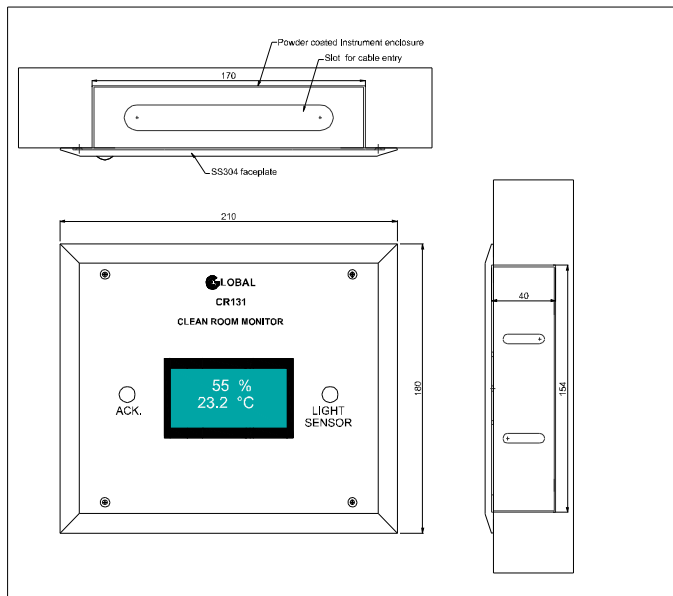


# CR131 Flameproof for Flush mounting in 50mm Panel



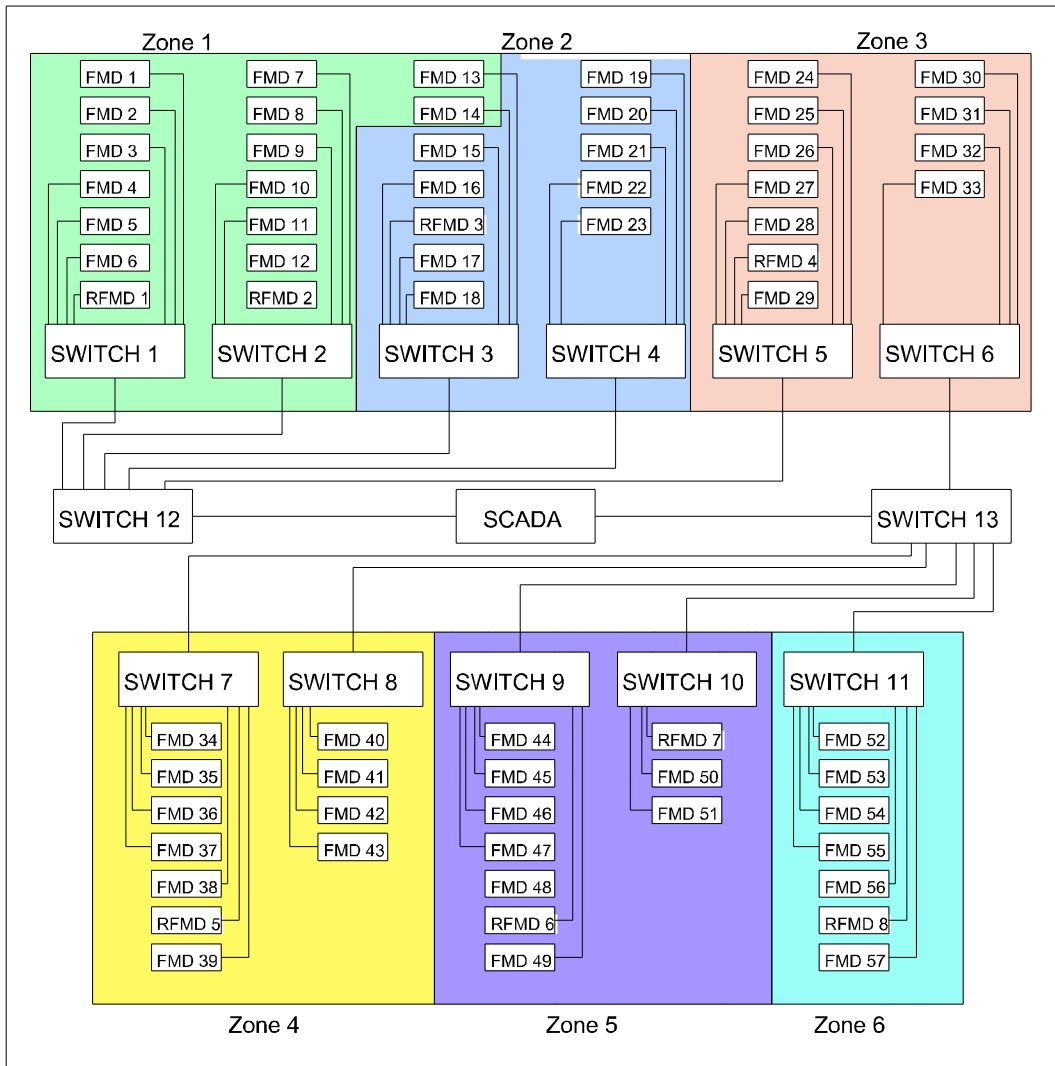


# CR131 Non Flameproof Flush mounting 50mm panel with Contactless Acknowledge



<p>NOTE: All Dimensions are in mm unless otherwise stated.</p> <p>This drawing is the property of Global Electronics and shall not be copied, reproduced or distributed without our express written permission.</p>	Rev No.	Description	By	Date	Approved
	Projection:	<p><b>GLOBAL ELECTRONICS</b> HYDERABAD-500029</p>	Designed:	07/04/18	TRS
			Drawn:	07/04/18	TRS
			Checked:	07/04/18	TRS
			Approved:	07/04/18	
Scale:	Title:	Title:			
NTS	CR131 LCD Ext sensors Contactless ACK GA Drawing	CR131 LCD GEST FM EXT SENS GA			
		Sheet:	1 of 1	Rev.: 0	

## Typical System Architecture for EMS with CR131 & MODBUS TCP/IP



**FMD : Field Monitoring device**

**RFMD :Remote Field Monitoring Display eith MODBUS INPUT**

**( for display of critical areas in corridor)**